

EXHAUST FAN SCHEDULE

TAG	LOCATION	SERVICE	CFM	FAN DATA			MOTOR DATA					MANUFACTURER AND MODEL	UNIT WT. LBS.	REMARKS		
				ESP. IN WC	FAN TYPE	RPM	DRIVE	BHP	HP	VOLT	FH				HZ	SCHEMS
BF-1	CEILING	BATHRM	100	0.25	CEILING	940	DIRECT	-	ØW	120	18	ØD	Ø3	GREENHECK 9P-110-VG	12	1-3
REF-1	ROOF	RTU-1	3000	0.5	ROOF	1218	DIRECT	Ø6.9	1.0	120	18	ØD	15.1	GREENHECK CUE-161-VG	Ø9	4-1
REF-2	CEILING	RTU-2	2000	0.5	IN-LINE	948	DIRECT	Ø3.2	3/4	120	18	ØD	8.0	GREENHECK 9Q-16Ø-VG	36	4-1
REF-3	ROOF	RTU-3	1200	0.5	ROOF	1142	DIRECT	Ø1.1	1/4	120	18	ØD	8.8	GREENHECK G--193-VG	41	4-1

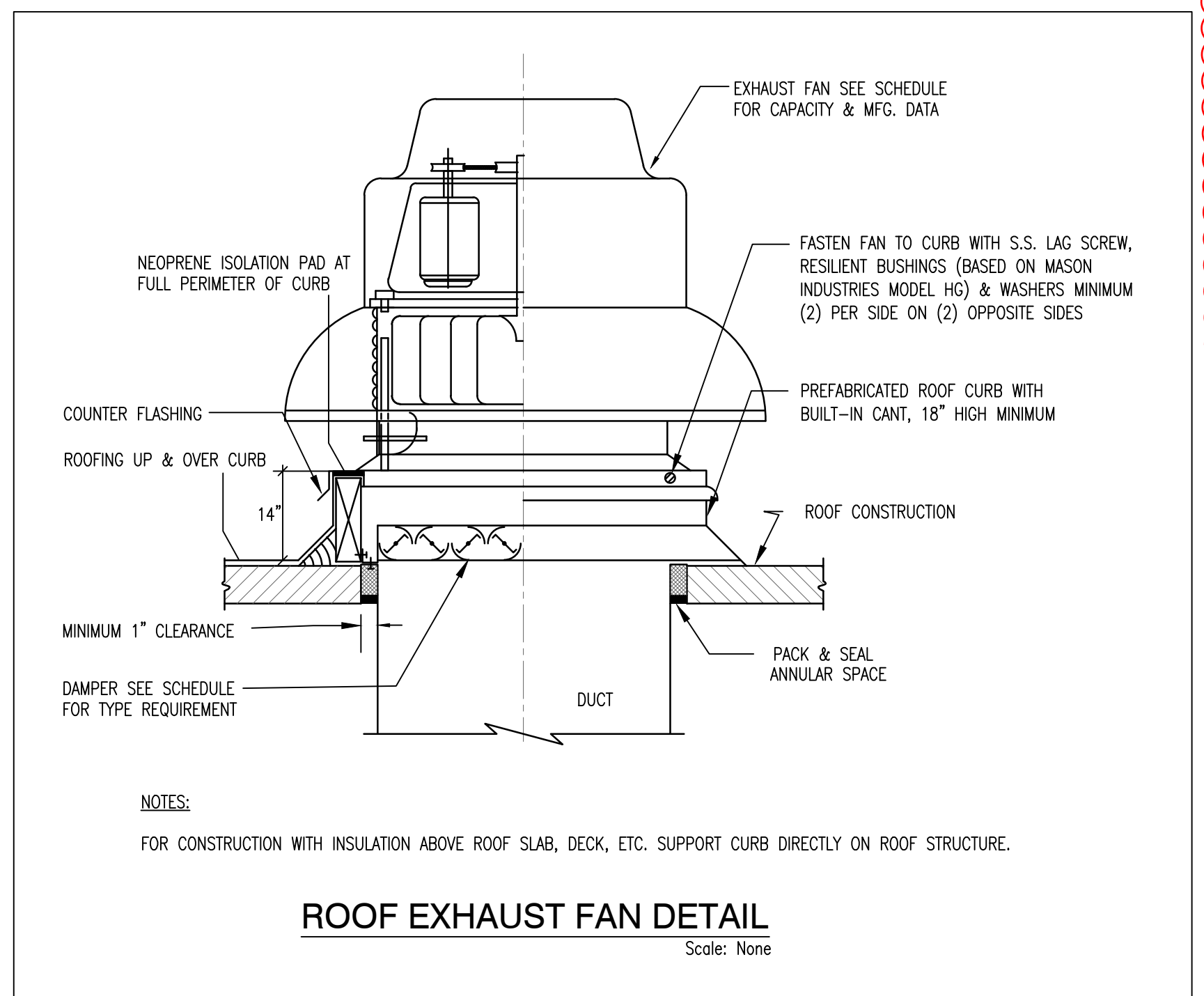
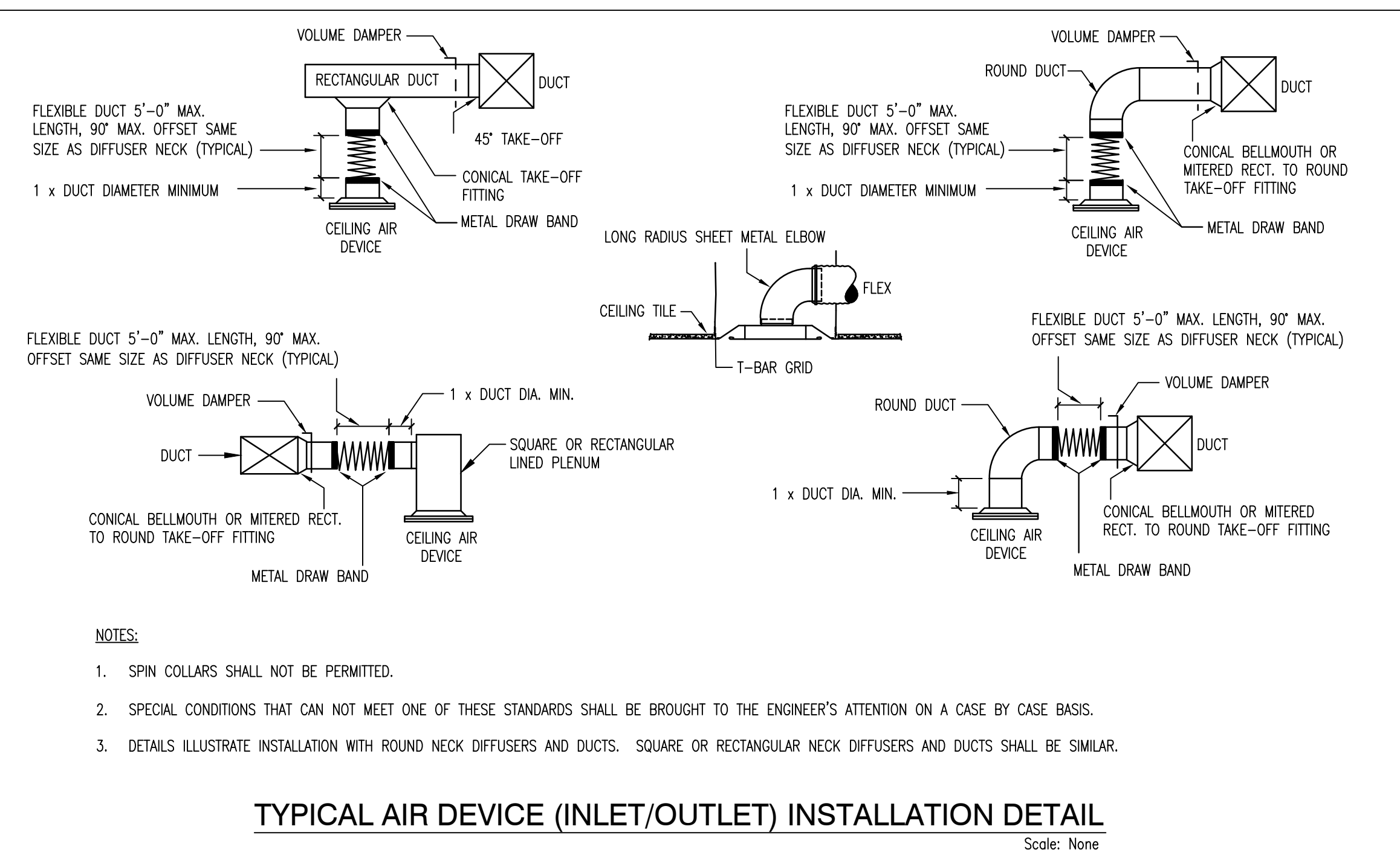
REMARKS:
 1. GRAVITY BACKDRAFT DAMPER.
 2. FAN SWITCH.
 3. HANGING VIBRATION ISOLATORS.
 4. DISCONNECT SWITCH.
 5. BIRD SCREEN.
 6. CURB ADAPTOR AS REQUIRED TO MOUNT TO EXISTING CURB.
 7. ECM MOTOR WITH MANUAL SPEED ADJUSTMENT FOR BALANCING.

AIR INLETS AND OUTLETS SCHEDULE

MARK	MANUF.	MODEL	TYPE	SERVICE	CFM RANGE	NECK SIZE	MODULE SIZE	MATERIAL	FINISH	FRAME	SOUND (NC)	REMARKS
Ⓐ	TITUS	OMNI	PLAQUE DIFFUSER	SUPPLY	0-100	6"	24"x24"	STEEL	WHITE	LAY-IN TYPE 3	25	
					101-200	8"						
					201-400	10"						
					401-600	12"						
Ⓑ	TITUS	OMNI	PLAQUE DIFFUSER	RETURN	0-100	6"	24"x24"	STEEL	WHITE	LAY-IN TYPE 3	25	
					101-200	8"						
					201-400	10"						
					401-600	12"						
					351-750	14"						
					751-860	15"						
Ⓒ					SUPPLY REGISTERS SHALL BE TITUS MODEL 300R, STEEL CONSTRUCTION WITH BAKED ON WHITE FINISH AND DOUBLE DEFLECTION ADJUSTABLE BLADE WITH 3/4" BLADE SPACING, SIZES AS INDICATED ON PLANS, FRONT BLADES PARALLEL TO LONG DIMENSION.							
Ⓓ					TRANSFER AIR GRILLE SHALL BE TITUS MODEL 350R, STEEL CONSTRUCTION WITH BAKED ON WHITE FINISH AND 35 DEGREES FIXED BLADE WITH 3/4" BLADE SPACING, COMPLETE WITH OPPOSED BLADE DAMPERS AND SIZES AS INDICATED ON CONTRACT DOCUMENTS.							

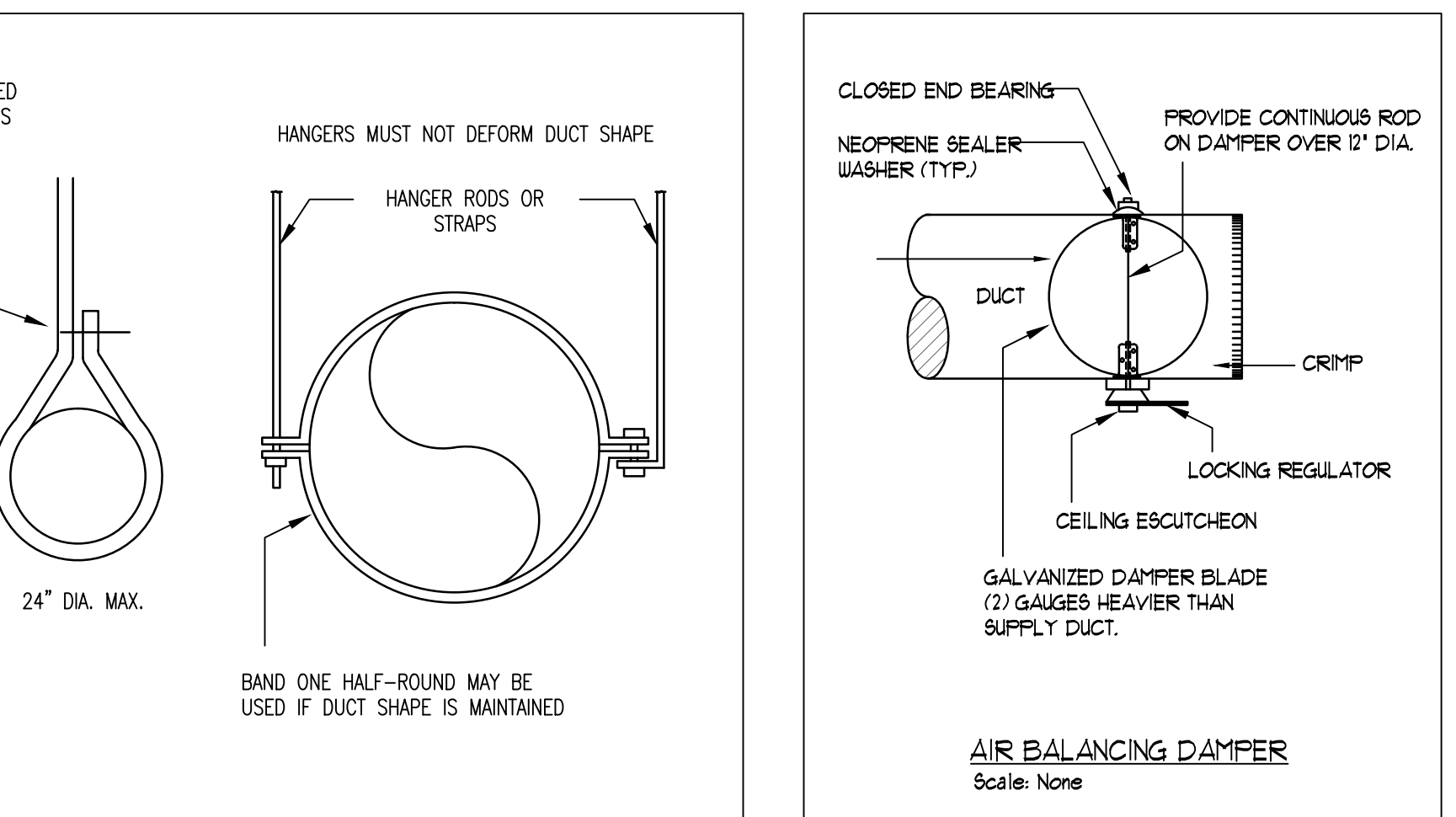
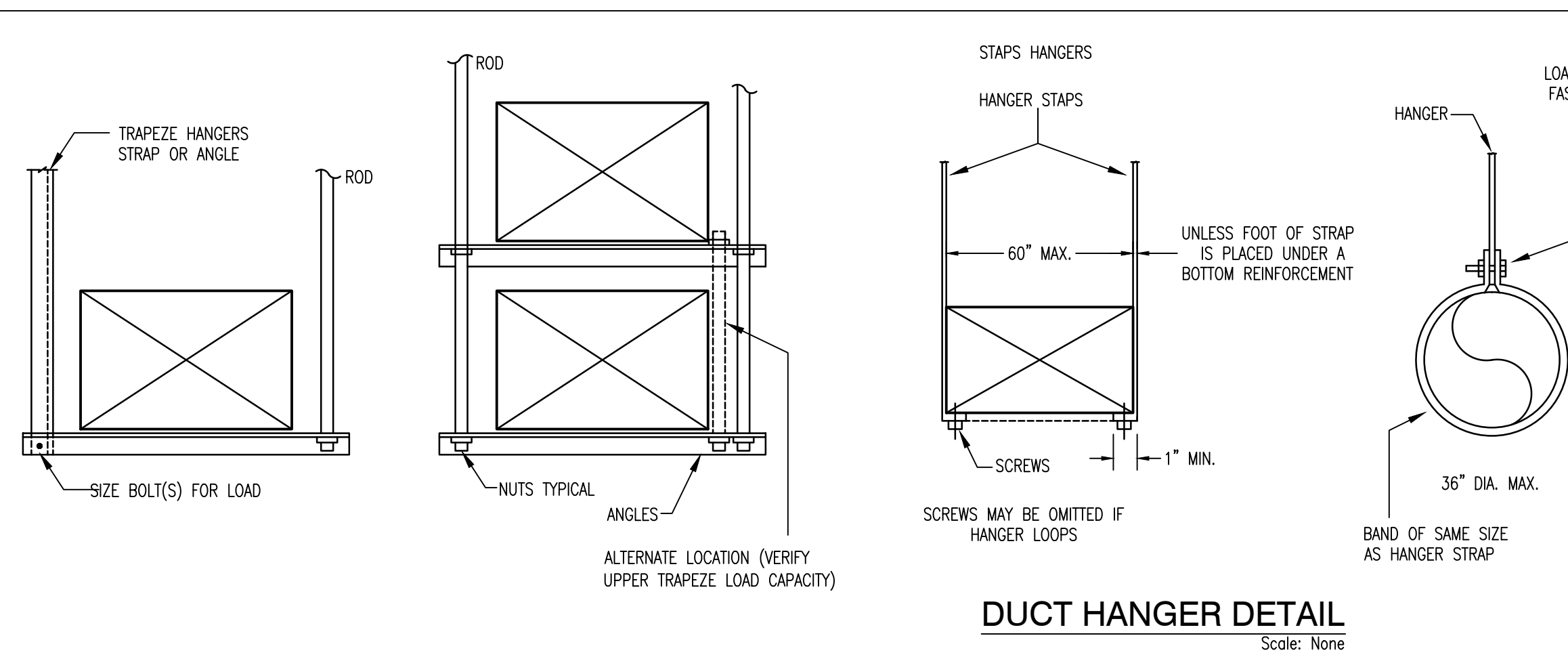
VENTILATION SCHEDULE

Room Name (Plan)	Room Purpose Per Table 403.3	Floor Area	Ordinance Requirements					Design Requirements					Equipment	
			Natural Light & Vent. (SF)	Mechanical Ventilation (CFM)	(RO) Relief Openings Req'n's	Natural Light & Vent. (SF)	Mechanical Ventilation (CFM)	(RO) Relief Openings (SF)						
VESTIBULE	VESTIBULE	302	NR	NR	NR	NR	NR	NR	NR	NR	NR	NR	NR	FC-1
FITNESS	GYMNASIUMS	336	NR	NR	672	504	NR	NR	NR	NR	NR	NR	NR	RTU-1
KITCHEN	FOOD PREP.	120	NR	NR	180	240	NR	NR	NR	NR	NR	NR	NR	RTU-1
COMMUNITY AREA	AUDITORIUMS	738	NR	NR	1,107	554	NR	NR	NR	NR	NR	NR	NR	RTU-1
STORAGE AREA	INACTIVE STOR.	124	NR	NR	NR	NR	NR	NR	NR	NR	NR	NR	NR	RTU-1
WAITING AREA	WAITING	445	NR	NR	445	445	NR	NR	NR	NR	NR	NR	NR	RTU-2
ELEVATOR LOBBY	LOBBY	740	NR	NR	740	NR	NR	NR	NR	NR	NR	NR	NR	RTU-2
MAIL	ACTIVE STOR.	254	NR	NR	127	127	NR	NR	NR	NR	NR	NR	NR	RTU-2
FILE ROOM	INACTIVE STOR.	38	NR	NR	NR	NR	NR	NR	NR	NR	NR	NR	NR	RTU-2
EGRESS CORRIDOR	CORRIDOR	388	NR	NR	NR	NR	NR	NR	NR	NR	NR	NR	NR	RTU-3
ENGINEER'S	OFFICE	114	NR	NR	69	50	NR	NR	NR	NR	NR	NR	NR	RTU-3
TOILET	TOILET	38	NR	NR	NR	76	NR	NR	NR	NR	NR	NR	NR	RTU-3
TOILET	TOILET	38	NR	NR	NR	76	NR	NR	NR	NR	NR	NR	NR	RTU-3
BUSINESS CONF.	OFFICE	122	NR	NR	74	50	NR	NR	NR	NR	NR	NR	NR	RTU-3
OFFICE #1	OFFICE	118	NR	NR	71	50	NR	NR	NR	NR	NR	NR	NR	RTU-3
OFFICE #2	OFFICE	132	NR	NR	80	50	NR	NR	NR	NR	NR	NR	NR	RTU-3
COPY/SUPPLIES	ACTIVE STOR.	70	NR	NR	50	50	NR	NR	NR	NR	NR	NR	NR	RTU-3
LEASING OFFICE	OFFICE	191	NR	NR	115	58	NR	NR	NR	NR	NR	NR	NR	RTU-3
STORAGE	INACTIVE STOR.	18	NR	NR	NR	NR	NR	NR	NR	NR	NR	NR	NR	RTU-3
ELEV 1	ELEV 1	46	NR	NR	NR	NR	NR	NR	NR	NR	NR	NR	NR	RTU-2
ELEV 2	ELEV 2	46	NR	NR	NR	NR	NR	NR	NR	NR	NR	NR	NR	RTU-2
ELEV 3	ELEV 3	46	NR	NR	NR	NR	NR	NR	NR	NR	NR	NR	NR	RTU-2
STAIR 1	STAIR 1	50	NR	NR	NR	NR	NR	NR	NR	NR	NR	NR	NR	RTU-2
STAIR 2	STAIR 2	74	NR	NR	NR	NR	NR	NR	NR	NR	NR	NR	NR	RTU-2
TOTAL		4,588												



HEAT LOSS

Room Number	Room Name (Plan)	CFM AIR SUPPLY	CALCULATED HEATING LOAD (BTU/Hr)	HEAT PROVIDED (BTU/Hr)	HEATING UNIT	Remarks
	VESTIBULE	1200	27,600	47,000	FC-1	VESTIBULE
	FITNESS	800	31,300	27,470	RTU-1	FIN TUBE RADIATION
	KITCHEN	500	9,400	17,165	RTU-1	
	COMMUNITY AREA	1500	66,600	51,500	RTU-1	ELECTRIC BASE BOARD
	STORAGE AREA	200	6,600	6,865	RTU-1	ELECTRIC BASE BOARD
	WAITING AREA	850	31,300	31,450	RTU-2	ELECTRIC BASE BOARD
	ELEVATOR LOBBY	900	29,700	33,300	RTU-2	ELECTRIC BASE BOARD
	MAIL	200	300	7,400	RTU-2	
	FILE ROOM	50	0	1,850	RTU-2	
	EGRESS CORRIDOR	200	0	9,830	RTU-3	
	ENGINEER'S	150	2,000	7,375	RTU-3	
	TOILET	75	0	3,690	RTU-3	
	TOILET	75	0	3,690	RTU-3	
	BUSINESS OFFICE	125	2,200	6,150	RTU-3	
	OFFICE #1	100	2,100	4,915	RTU-3	
	OFFICE #2	100	2,400	4,915	RTU-3	
	COPY/SUPPLIES	100	1,100	4,915	RTU-3	
	LEASING OFFICE	275	3,400	13,520	RTU-3	
	STORAGE	0	0	0	-	
	ELEV 1	0	0	-	-	
	ELEV 2	0	0	-	-	
	ELEV 3	0	0	-	-	
	STAIR 1	0	0	-	-	
	STAIR 2	0	0	-	-	



I hereby certify that these plans were prepared under my supervision and that they comply to the best of my knowledge with all the building codes and ordinances of the city of Chicago, Ill.

NO.	DATE	DESCRIPTION
1	12.21.17	PROGRESS SET
2	03.30.18	PERMIT SET

A. WILLIAM SEEGRS ARCHITECTS
 Chicago, Illinois 60661
 Phone 312-454-0099 E-mail AWSeegr@aol.com

Drawing Title:
1st Floor Upgrade Repairs
 2101 S. Michigan Avenue
 Chicago, IL

DESCRIPTION:
SCHEDULES AND DETAILS

JOB NO. 1701
 DRAWN BY: -
 CHECKED BY: -
 DATE: 10-06-17
 SHEET NO.
M2.00